

# Ridge Scenic Highway Bike/Pedestrian Master Plan

FPID 403439-1-12-11



**JACOBS**

LEGEND	
	Proposed 12' Multi-Use Path
	Proposed 5' Sidewalk
	Proposed 8' Multi-Use Path
	Existing 5' Sidewalk
	Proposed Guardrail
	Proposed Retaining Wall
	Planned Trail
	County/City Boundary
	Full Signal
	Flashing Yellow Signal
	Mile Marker

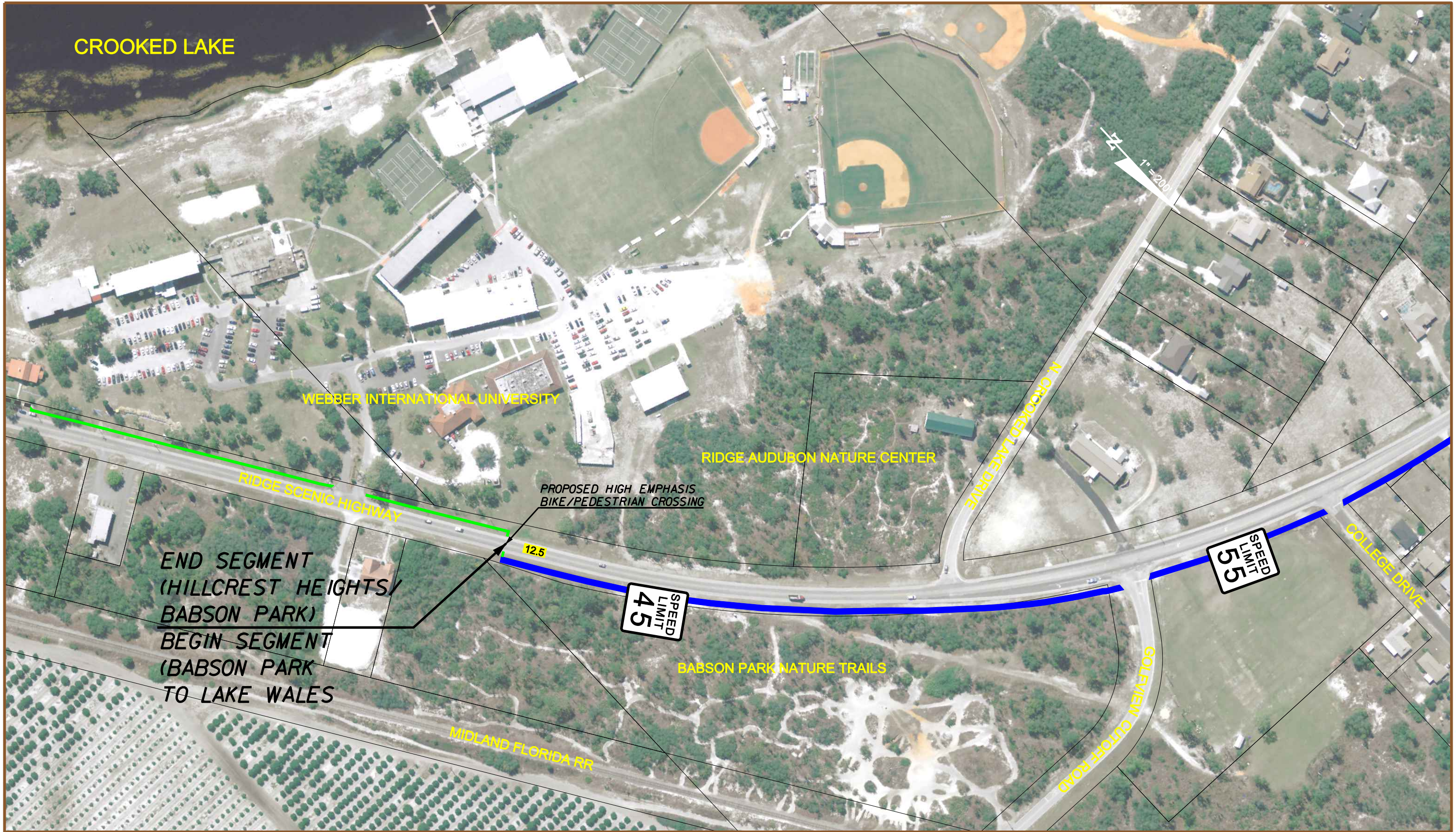
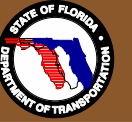
GIS Data Source: Polk County  
 GIS Data Date: December 9, 2008  
 Aerial Data Source: Polk County  
 Aerial Data Date: December 9, 2008

**Corridor Detail Sheet**  
 MP 11.67 to MP 12.31

EXHIBIT NO.  
**D-22**

# Ridge Scenic Highway Bike/Pedestrian Master Plan

FPID 403439-1-12-11



END SEGMENT  
(HILLCREST HEIGHTS/  
BABSON PARK)  
BEGIN SEGMENT  
(BABSON PARK  
TO LAKE WALES)



LEGEND	
	Proposed 12' Multi-Use Path
	Proposed 5' Sidewalk
	Proposed 8' Multi-Use Path
	Existing 5' Sidewalk
	Proposed Guardrail
	Proposed Retaining Wall
	Planned Trail
	County/City Boundary
	Full Signal
	Flashing Yellow Signal
	Mile Marker

GIS Data Source: Polk County  
 GIS Data Date: December 9, 2008  
 Aerial Data Source: Polk County  
 Aerial Data Date: December 9, 2008

Corridor Detail Sheet  
 MP 12.30 to MP 12.88

EXHIBIT NO.  
**D-23**

# Ridge Scenic Highway Bike/Pedestrian Master Plan

FPID 403439-1-12-11



LEGEND			
	Proposed 12' Multi-Use Path		Full Signal
	Proposed 5' Sidewalk		Flashing Yellow Signal
	Proposed 8' Multi-Use Path		Mile Marker
	Existing 5' Sidewalk		Proposed Guardrail
			Proposed Retaining Wall
			Planned Trail
			County/City Boundary

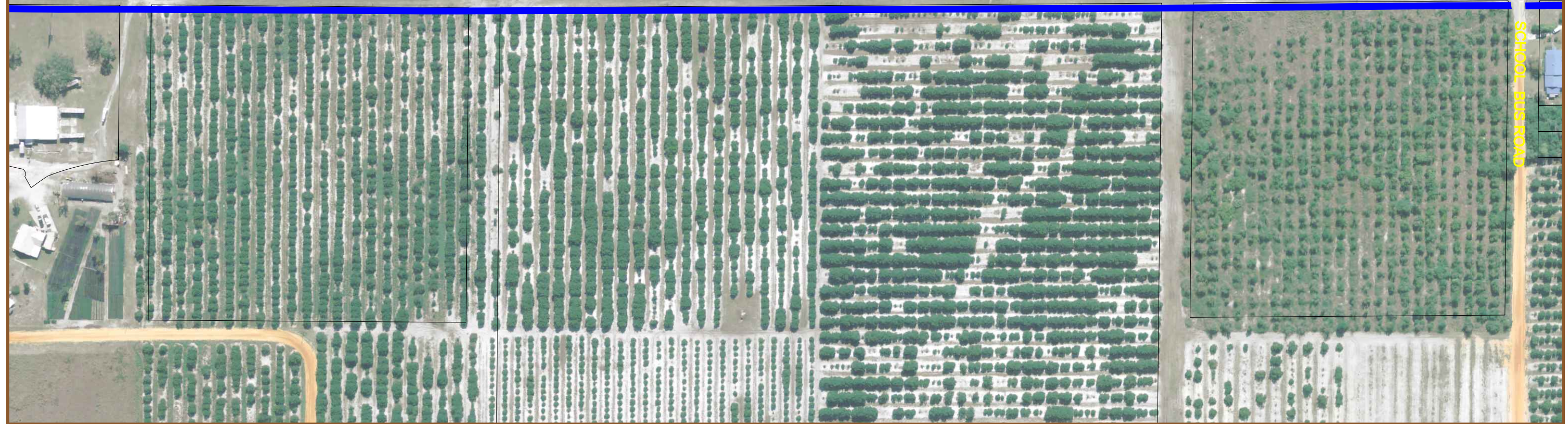
GIS Data Source: Polk County  
 GIS Data Date: December 9, 2008  
 Aerial Data Source: Polk County  
 Aerial Data Date: December 9, 2008

Corridor Detail Sheet  
 MP 12.86 to MP 13.42

EXHIBIT NO.  
**D-24**

# Ridge Scenic Highway Bike/Pedestrian Master Plan

FPID 403439-1-12-11



**JACOBS**

LEGEND					
	Proposed 12' Multi-Use Path		Proposed Guardrail		Full Signal
	Proposed 5' Sidewalk		Proposed Retaining Wall		Flashing Yellow Signal
	Proposed 8' Multi-Use Path		Planned Trail		Mile Marker
	Existing 5' Sidewalk		County/City Boundary		

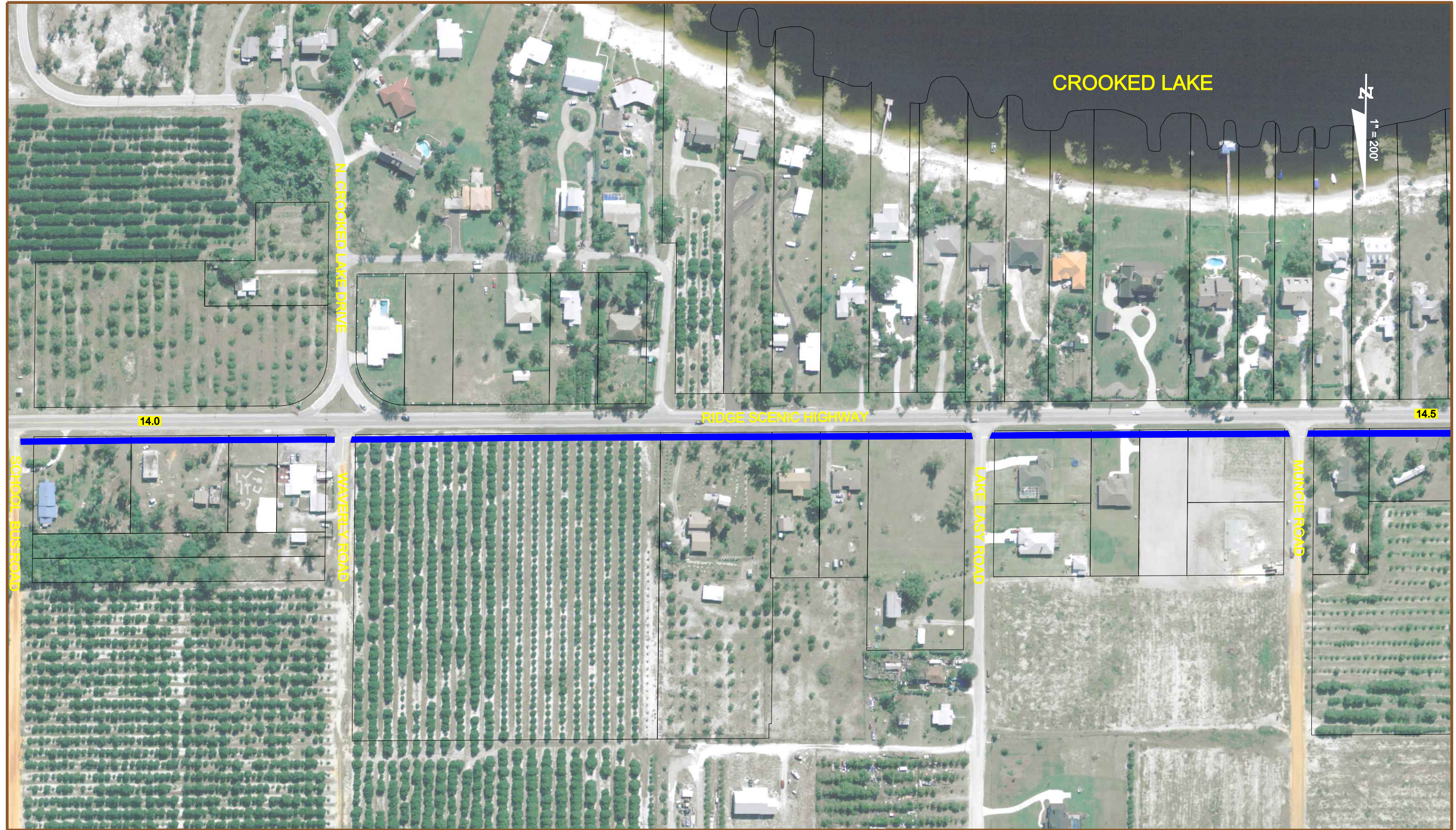
GIS Data Source: Polk County  
 GIS Data Date: December 9, 2008  
 Aerial Data Source: Polk County  
 Aerial Data Date: December 9, 2008

**Corridor Detail Sheet**  
 MP 13.40 to MP 13.97

EXHIBIT NO.  
**D-25**

# Ridge Scenic Highway Bike/Pedestrian Master Plan

FPID 403439-1-12-11



LEGEND			
	Proposed 12' Multi-Use Path		Full Signal
	Proposed 5' Sidewalk		Flashing Yellow Signal
	Proposed 8' Multi-Use Path		Mile Marker
	Existing 5' Sidewalk		County/City Boundary
	Proposed Guardrail		Proposed Retaining Wall
	Planned Trail		

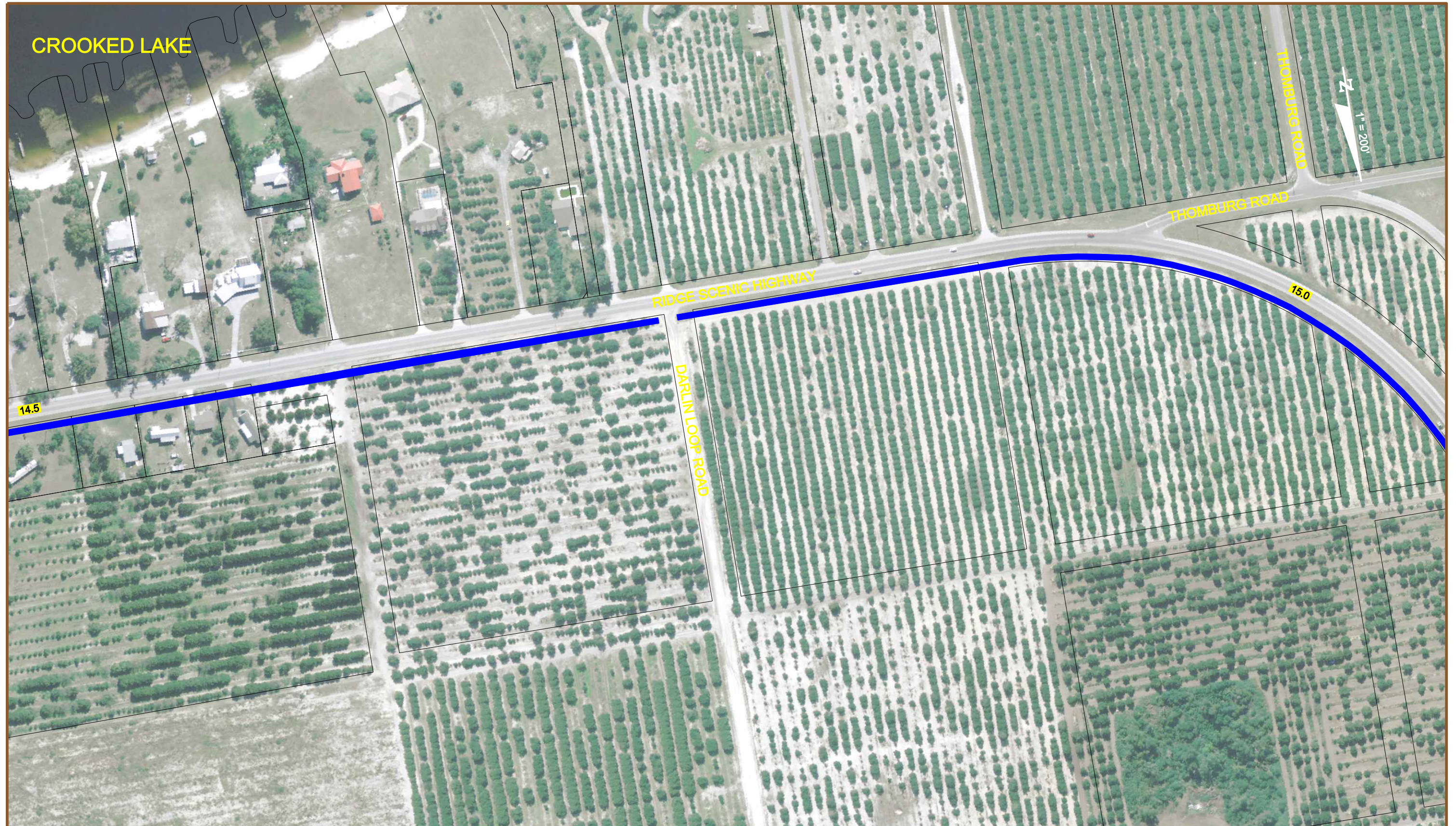
GIS Data Source: Polk County  
 GIS Data Date: December 9, 2008  
 Aerial Data Source: Polk County  
 Aerial Data Date: December 9, 2008

Corridor Detail Sheet  
 MP 13.95 to MP 14.51

EXHIBIT NO.  
**D-26**

# Ridge Scenic Highway Bike/Pedestrian Master Plan

FPID 403439-1-12-11



**JACOBS**

LEGEND			
	Proposed 12' Multi-Use Path		Full Signal
	Proposed 5' Sidewalk		Flashing Yellow Signal
	Proposed 8' Multi-Use Path		Mile Marker
	Existing 5' Sidewalk		
	Proposed Guardrail		
	Proposed Retaining Wall		
	Planned Trail		
	County/City Boundary		

GIS Data Source: Polk County  
 GIS Data Date: December 9, 2008  
 Aerial Data Source: Polk County  
 Aerial Data Date: December 9, 2008

**Corridor Detail Sheet**  
 MP 14.40 to MP 15.08

EXHIBIT NO.  
**D-27**

# Ridge Scenic Highway Bike/Pedestrian Master Plan

FPID 403439-1-12-11



LEGEND			
	Proposed 12' Multi-Use Path		Full Signal
	Proposed 5' Sidewalk		Flashing Yellow Signal
	Proposed 3' Multi-Use Path		Mile Marker
	Existing 5' Sidewalk		Proposed Guardrail
	Proposed Retaining Wall		Planned Trail
	County/City Boundary		

GIS Data Source: Polk County  
 GIS Data Date: December 9, 2008  
 Aerial Data Source: Polk County  
 Aerial Data Date: December 9, 2008

Corridor Detail Sheet  
 MP 15.06 to MP 15.62

EXHIBIT NO.  
**D-28**

# Ridge Scenic Highway Bike/Pedestrian Master Plan

FPID 403439-1-12-11



**JACOBS**

LEGEND			
	Proposed 12' Multi-Use Path		Full Signal
	Proposed 5' Sidewalk		Flashing Yellow Signal
	Proposed 8' Multi-Use Path		Mile Marker
	Existing 5' Sidewalk		Proposed Guardrail
	Proposed Retaining Wall		Planned Trail
	County/City Boundary		

GIS Data Source: Polk County  
 GIS Data Date: December 9, 2008  
 Aerial Data Source: Polk County  
 Aerial Data Date: December 9, 2008

**Corridor Detail Sheet**  
 MP 15.60 to MP 16.17

EXHIBIT NO.  
**D-29**



# Ridge Scenic Highway Bike/Pedestrian Master Plan

FPID 403439-1-12-11



**JACOBS**

LEGEND	
	Proposed 12' Multi-Use Path
	Proposed 5' Sidewalk
	Proposed 8' Multi-Use Path
	Existing 5' Sidewalk
	Proposed Guardrail
	Proposed Retaining Wall
	Planned Trail
	County/City Boundary
	Full Signal
	Flashing Yellow Signal
	Mile Marker

GIS Data Source: Polk County  
 GIS Data Date: December 9, 2008  
 Aerial Data Source: Polk County  
 Aerial Data Date: December 9, 2008

**Corridor Detail Sheet**  
 MP 16.15 to MP 16.76

EXHIBIT NO.  
**D-30**

# Ridge Scenic Highway Bike/Pedestrian Master Plan

FPID 403439-1-12-11



**JACOBS**

LEGEND	
	Proposed 12' Multi-Use Path
	Proposed 5' Sidewalk
	Proposed 8' Multi-Use Path
	Existing 5' Sidewalk
	Proposed Guardrail
	Proposed Retaining Wall
	Planned Trail
	County/City Boundary
	Full Signal
	Flashing Yellow Signal
	Mile Marker

GIS Data Source: Polk County  
 GIS Data Date: December 9, 2008  
 Aerial Data Source: Polk County  
 Aerial Data Date: December 9, 2008

**Corridor Detail Sheet**  
 MP 16.70 to MP 17.36

EXHIBIT NO.  
**D-31**

# Ridge Scenic Highway Bike/Pedestrian Master Plan

FPID 403439-1-12-11



**JACOBS**

- Proposed 12' Multi-Use Path
- Proposed 5' Sidewalk
- Proposed 8' Multi-Use Path
- Existing 5' Sidewalk

**LEGEND**

- Proposed Guardrail
- Proposed Retaining Wall
- Planned Trail
- County/City Boundary

- Full Signal
- Flashing Yellow Signal
- Mile Marker

GIS Data Source: Polk County  
 GIS Data Date: December 9, 2008  
 Aerial Data Source: Polk County  
 Aerial Data Date: December 9, 2008

**Corridor Detail Sheet**  
 MP 17.34 to MP 17.90

EXHIBIT NO.  
**D-32**

# Ridge Scenic Highway Bike/Pedestrian Master Plan

FPID 403439-1-12-11



LEGEND	
	Proposed 12' Multi-Use Path
	Proposed 5' Sidewalk
	Proposed 8' Multi-Use Path
	Existing 5' Sidewalk
	Proposed Guardrail
	Proposed Retaining Wall
	Planned Trail
	County/City Boundary
	Full Signal
	Flashing Yellow Signal
	Mile Marker

GIS Data Source: Polk County  
 GIS Data Date: December 9, 2008  
 Aerial Data Source: Polk County  
 Aerial Data Date: December 9, 2008

Corridor Detail Sheet  
 MP 17.88 to MP 18.44

EXHIBIT NO.  
**D-33**

# Ridge Scenic Highway Bike/Pedestrian Master Plan

FPID 403439-1-12-11



LEGEND	
	Proposed 12' Multi-Use Path
	Proposed 5' Sidewalk
	Proposed 8' Multi-Use Path
	Existing 5' Sidewalk
	Proposed Guardrail
	Proposed Retaining Wall
	Planned Trail
	County/City Boundary
	Full Signal
	Flashing Yellow Signal
	Mile Marker

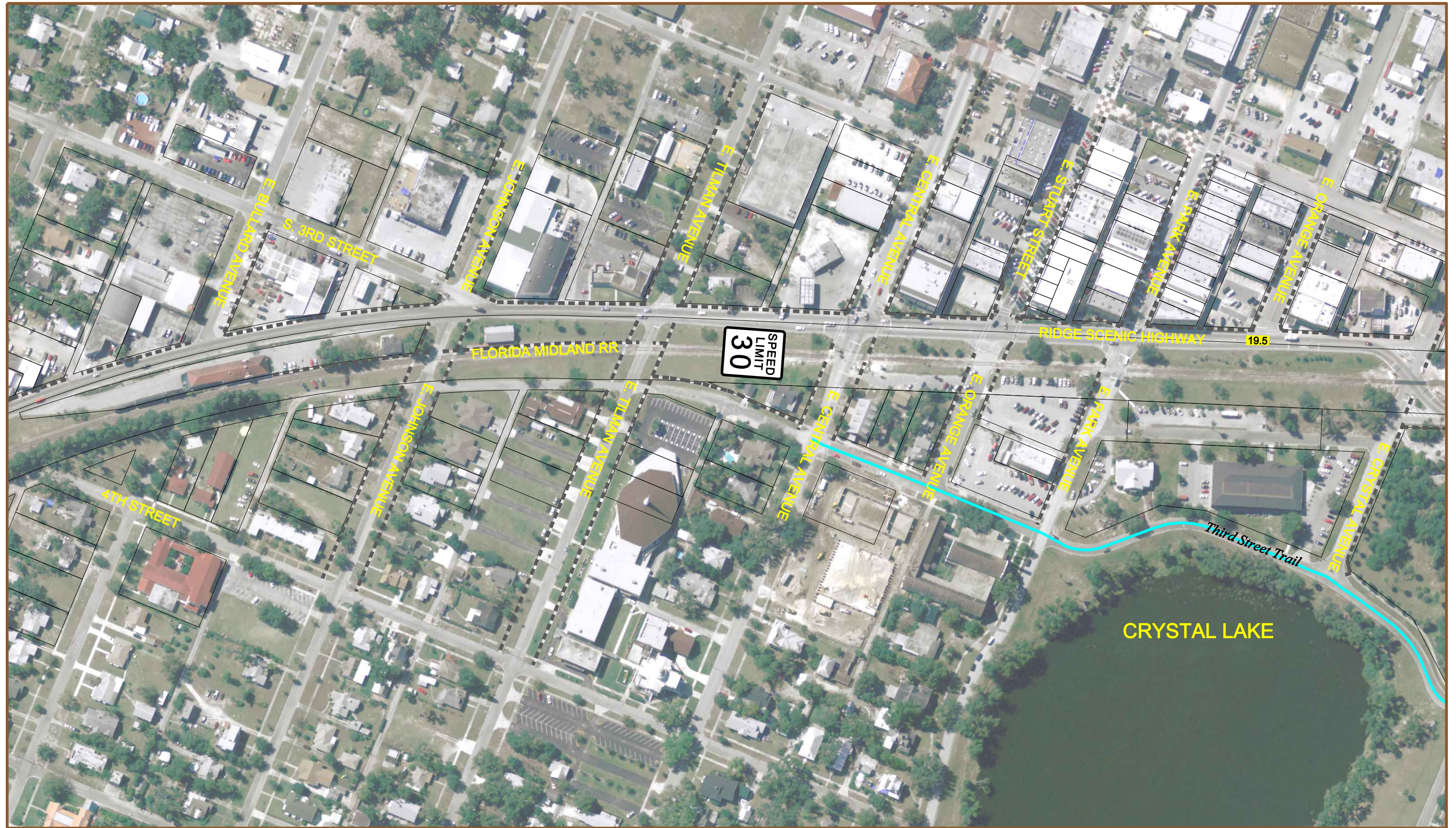
GIS Data Source: Polk County  
 GIS Data Date: December 9, 2008  
 Aerial Data Source: Polk County  
 Aerial Data Date: December 9, 2008

Corridor Detail Sheet  
 MP 18.42 to MP 19.03

EXHIBIT NO.  
**D-34**

# Ridge Scenic Highway Bike/Pedestrian Master Plan

FPID 403439-1-12-11



**JACOBS**

LEGEND			
	Proposed 12' Multi-Use Path		Proposed Guardrail
	Proposed 5' Sidewalk		Proposed Retaining Wall
	Proposed 8' Multi-Use Path		Planned Trail
	Existing 5' Sidewalk		County/City Boundary
	Full Signal		Flashing Yellow Signal
			Mile Marker

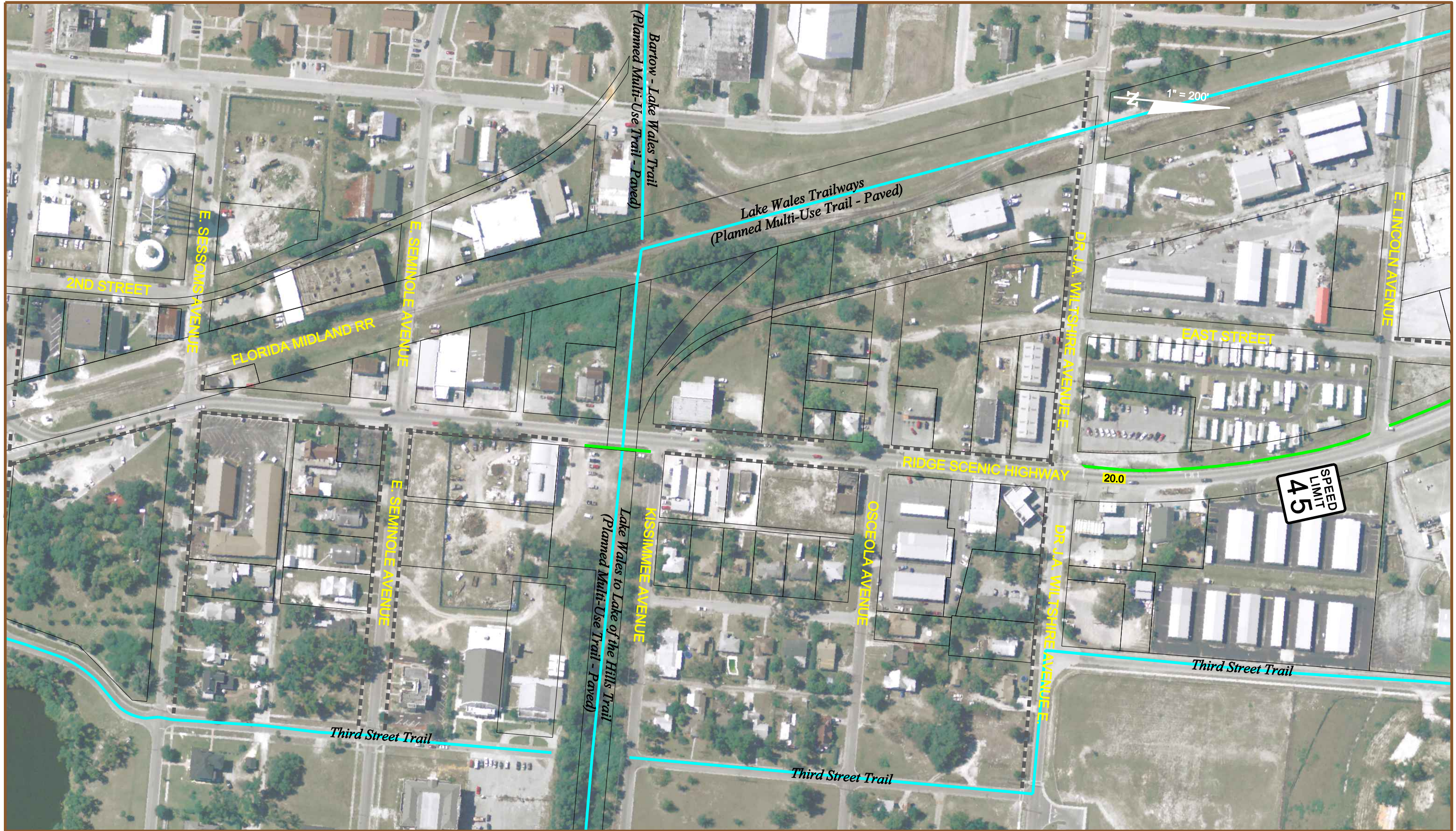
GIS Data Source: Polk County  
 GIS Data Date: December 9, 2008  
 Aerial Data Source: Polk County  
 Aerial Data Date: December 9, 2008

**Corridor Detail Sheet**  
 MP 19.01 to MP 19.59

EXHIBIT NO.  
**D-35**

# Ridge Scenic Highway Bike/Pedestrian Master Plan

FPID 403439-1-12-11



LEGEND					
	Proposed 12' Multi-Use Path		Proposed Guardrail		Full Signal
	Proposed 5' Sidewalk		Proposed Retaining Wall		Flashing Yellow Signal
	Proposed 8' Multi-Use Path		Planned Trail		Mile Marker
	Existing 5' Sidewalk		County/City Boundary		

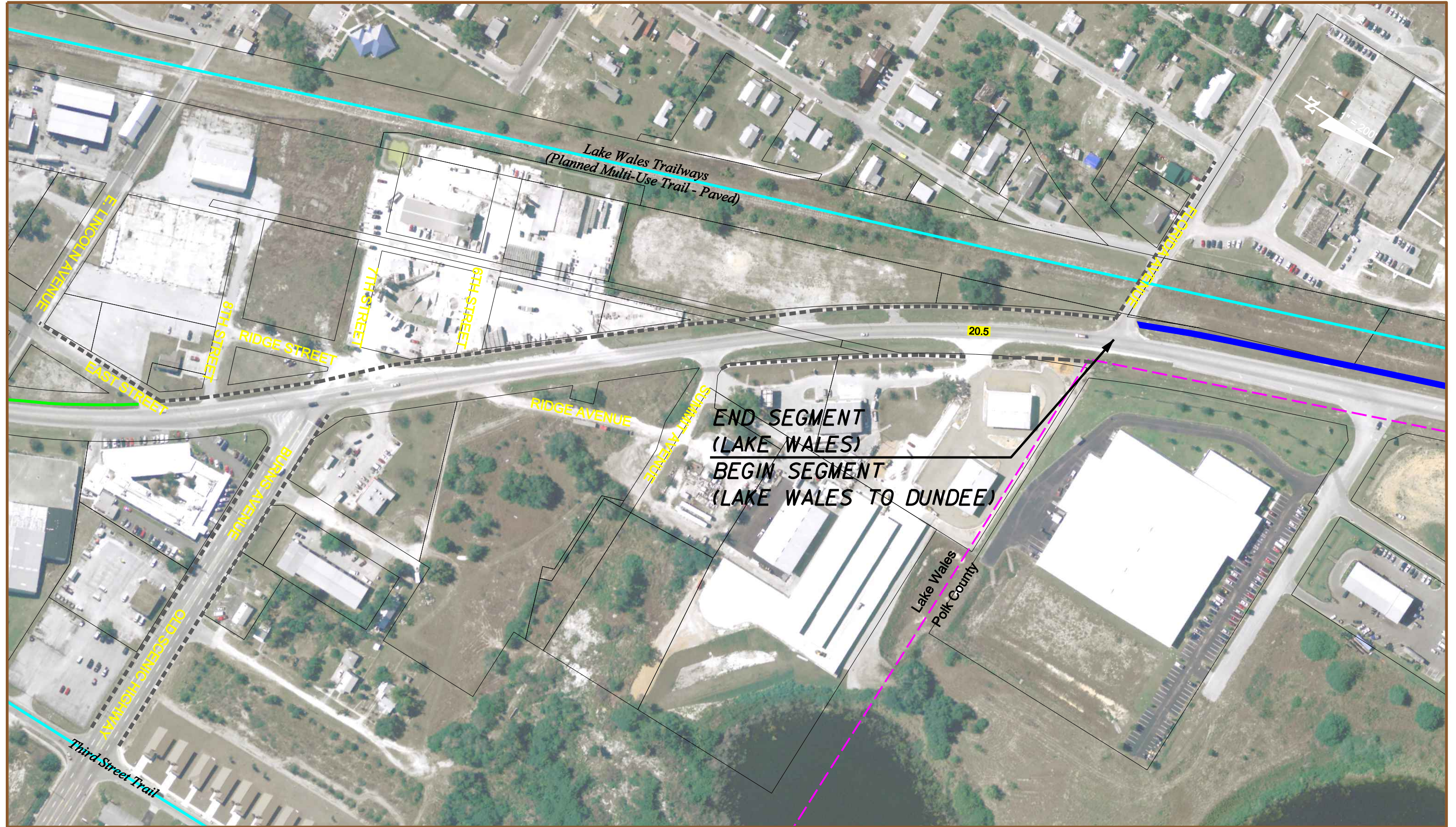
GIS Data Source: Polk County  
 GIS Data Date: December 9, 2008  
 Aerial Data Source: Polk County  
 Aerial Data Date: December 9, 2008

Corridor Detail Sheet  
 MP 19.57 to MP 20.14

EXHIBIT NO.  
**D-36**

# Ridge Scenic Highway Bike/Pedestrian Master Plan

FPID 403439-1-12-11



**END SEGMENT  
(LAKE WALES)**  
**BEGIN SEGMENT  
(LAKE WALES TO DUNDEE)**



LEGEND	
	Proposed 12' Multi-Use Path
	Proposed 5' Sidewalk
	Proposed 8' Multi-Use Path
	Existing 5' Sidewalk
	Proposed Guardrail
	Proposed Retaining Wall
	Planned Trail
	County/City Boundary
	Full Signal
	Flashing Yellow Signal
	Mile Marker

GIS Data Source:	Polk County
GIS Data Date:	December 9, 2008
Aerial Data Source:	Polk County
Aerial Data Date:	December 9, 2008

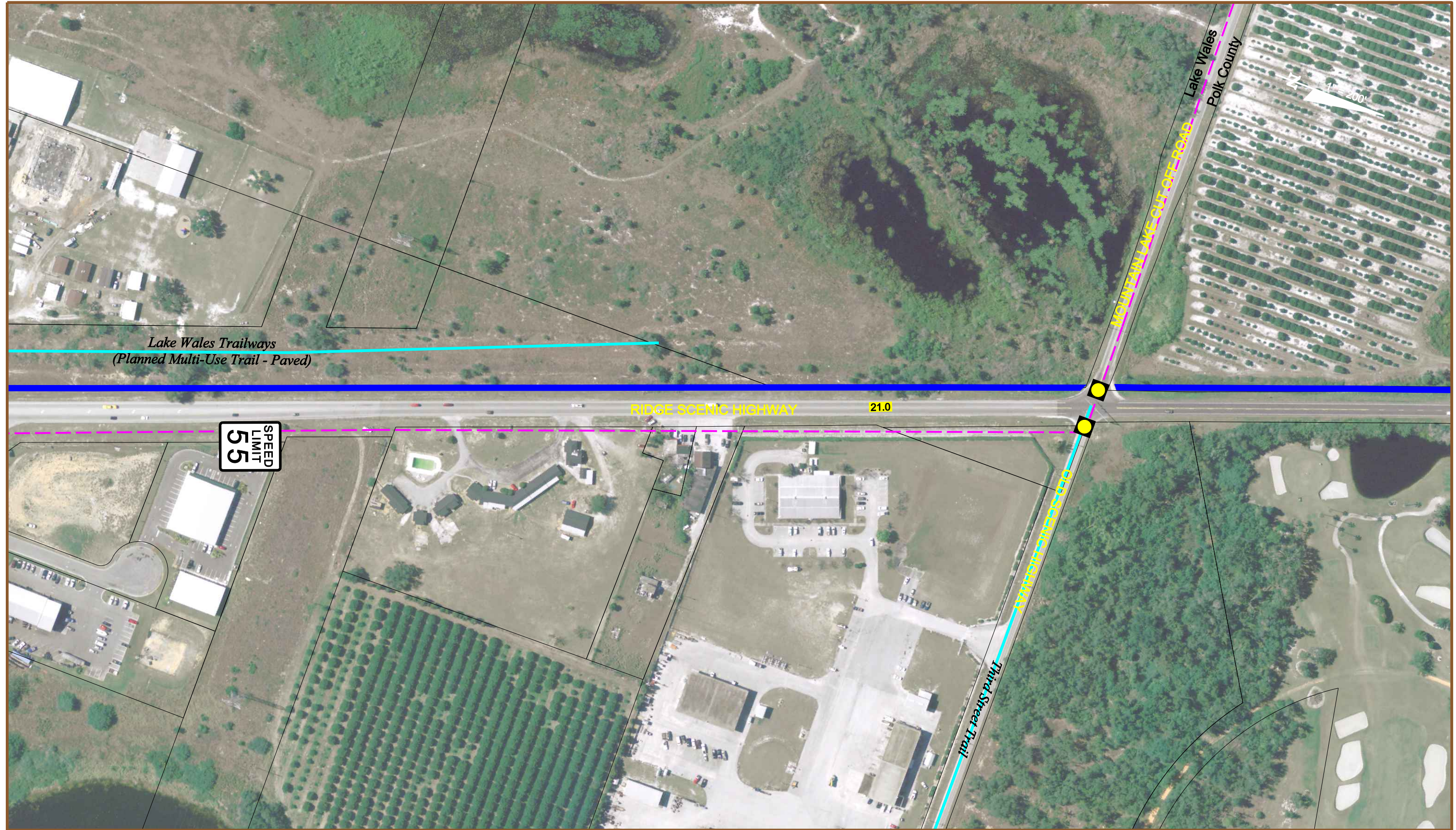
**Corridor Detail Sheet**  
**MP 20.12 to MP 20.68**

EXHIBIT NO.  
**D-37**



# Ridge Scenic Highway Bike/Pedestrian Master Plan

FPID 403439-1-12-11



**JACOBS**

LEGEND	
	Proposed 12' Multi-Use Path
	Proposed 5' Sidewalk
	Proposed 8' Multi-Use Path
	Existing 5' Sidewalk
	Proposed Guardrail
	Proposed Retaining Wall
	Planned Trail
	County/City Boundary
	Full Signal
	Flashing Yellow Signal
	Mile Marker

GIS Data Source: Polk County  
 GIS Data Date: December 9, 2008  
 Aerial Data Source: Polk County  
 Aerial Data Date: December 9, 2008

**Corridor Detail Sheet**  
 MP 20.66 to MP 21.23

EXHIBIT NO.  
**D-38**

# Ridge Scenic Highway Bike/Pedestrian Master Plan

FPID 403439-1-12-11



**JACOBS**

- Proposed 12' Multi-Use Path
- Proposed 5' Sidewalk
- Proposed 8' Multi-Use Path
- Existing 5' Sidewalk

**LEGEND**

- Proposed Guardrail
- Proposed Retaining Wall
- Planned Trail
- County/City Boundary

- Full Signal
- Flashing Yellow Signal
- Mile Marker

GIS Data Source: Polk County  
 GIS Data Date: December 9, 2008  
 Aerial Data Source: Polk County  
 Aerial Data Date: December 9, 2008

Corridor Detail Sheet  
 MP 21.21 to MP 21.77

EXHIBIT NO.  
**D-39**

# Ridge Scenic Highway Bike/Pedestrian Master Plan

FPID 403439-1-12-11



**JACOBS**

LEGEND	
	Proposed 12' Multi-Use Path
	Proposed 5' Sidewalk
	Proposed 8' Multi-Use Path
	Existing 5' Sidewalk
	Proposed Guardrail
	Proposed Retaining Wall
	Planned Trail
	County/City Boundary
	Full Signal
	Flashing Yellow Signal
	Mile Marker

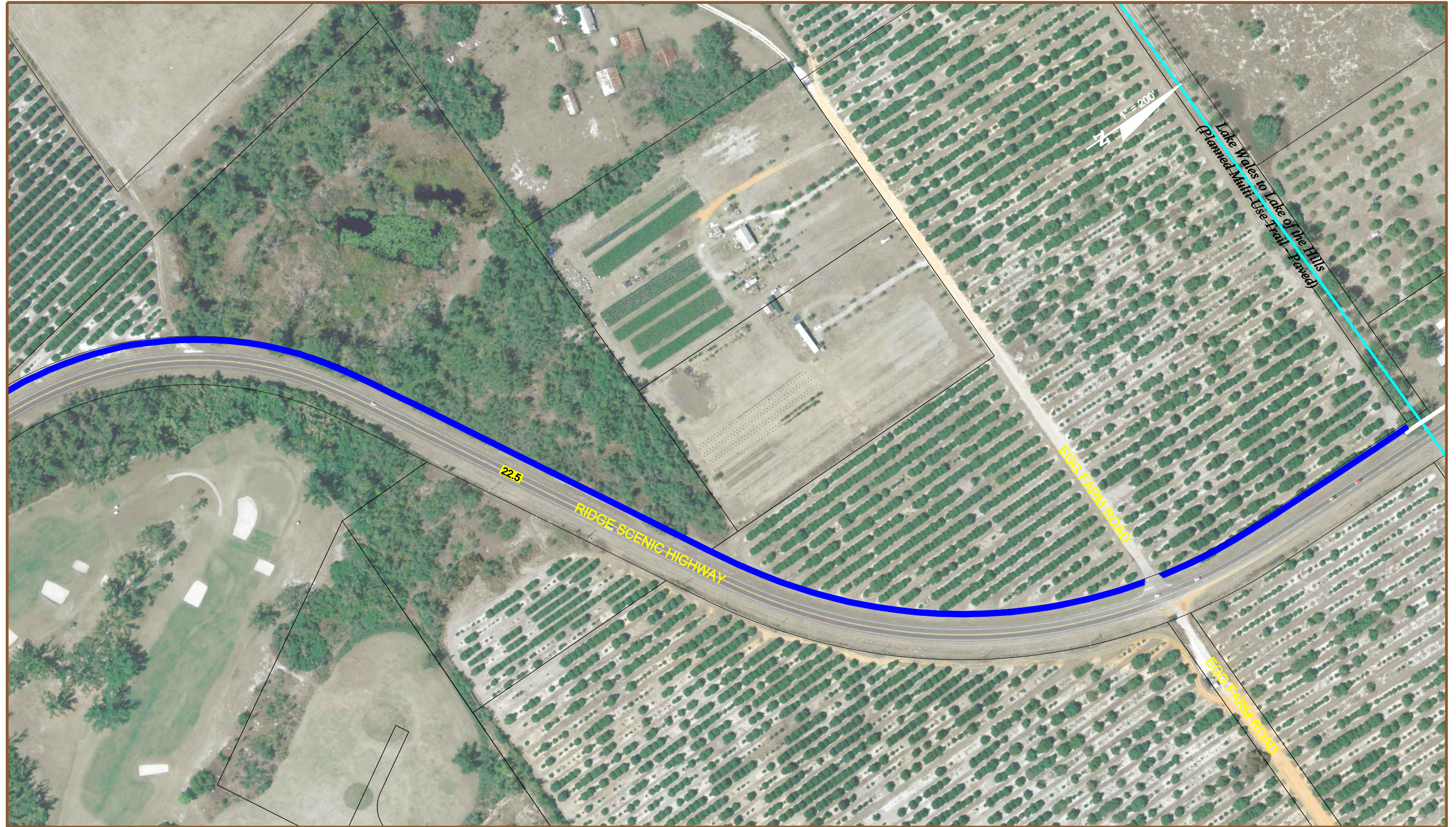
GIS Data Source: Polk County  
 GIS Data Date: December 9, 2008  
 Aerial Data Source: Polk County  
 Aerial Data Date: December 9, 2008

Corridor Detail Sheet  
 MP 21.75 to MP 22.31

EXHIBIT NO.  
**D-40**

# Ridge Scenic Highway Bike/Pedestrian Master Plan

FPID 403439-1-12-11



**JACOBS**

- ▬ Proposed 12' Multi-Use Path
- ▬ Proposed 5' Sidewalk
- ▬ Proposed 8' Multi-Use Path
- ▬ Existing 5' Sidewalk

**LEGEND**

- ▬ Proposed Guardrail
- ▬ Proposed Retaining Wall
- ▬ Planned Trail
- ▬ County/City Boundary

- Full Signal
- Flashing Yellow Signal
- XX Mile Marker

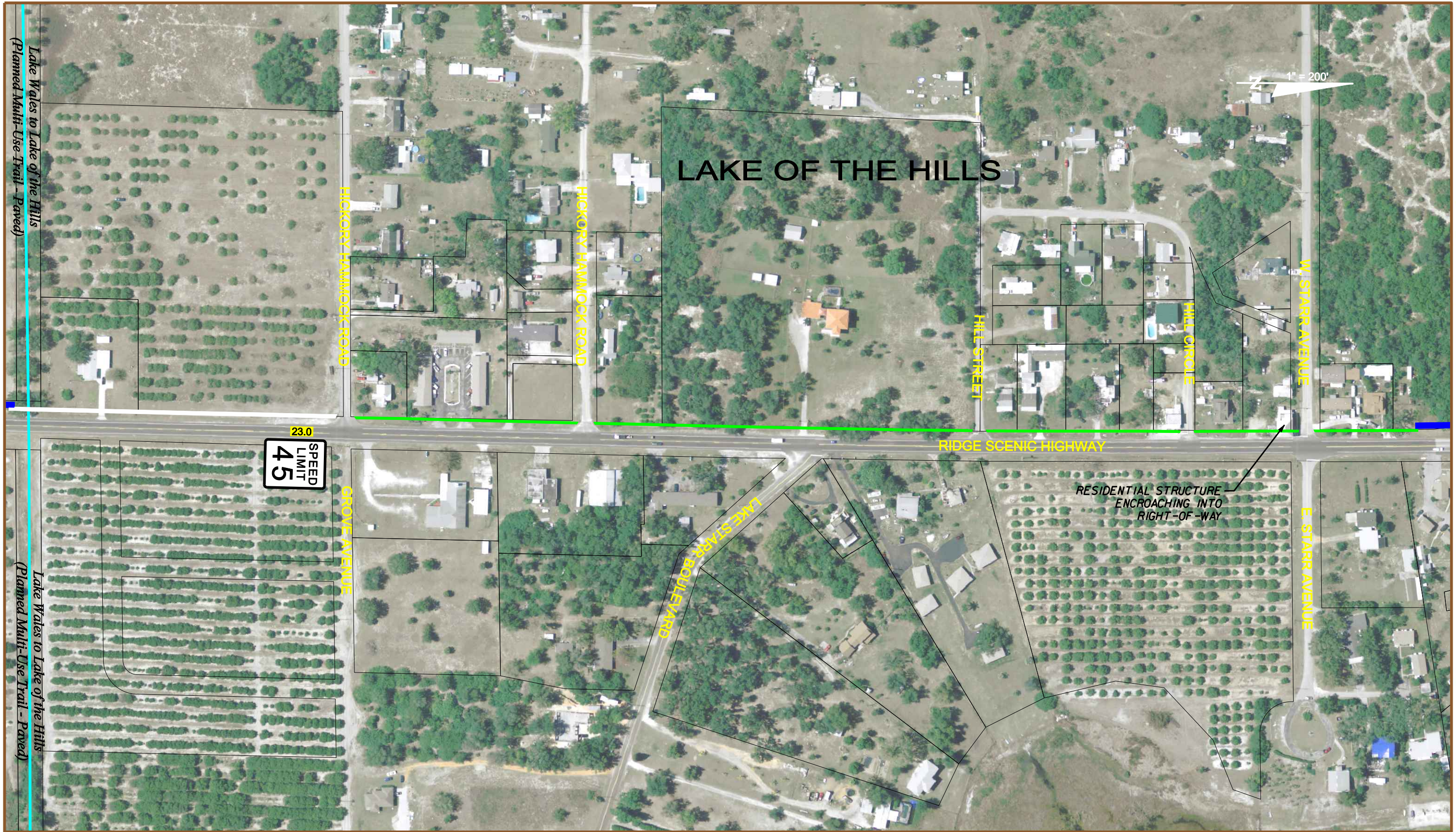
GIS Data Source: Polk County  
 GIS Data Date: December 9, 2008  
 Aerial Data Source: Polk County  
 Aerial Data Date: December 9, 2008

**Corridor Detail Sheet**  
 MP 22.29 to MP 22.90

EXHIBIT NO.  
**D-41**

# Ridge Scenic Highway Bike/Pedestrian Master Plan

FPID 403439-1-12-11



LEGEND	
	Proposed 12' Multi-Use Path
	Proposed 5' Sidewalk
	Proposed 8' Multi-Use Path
	Existing 5' Sidewalk
	Proposed Guardrail
	Proposed Retaining Wall
	Planned Trail
	County/City Boundary
	Full Signal
	Flashing Yellow Signal
	Mile Marker

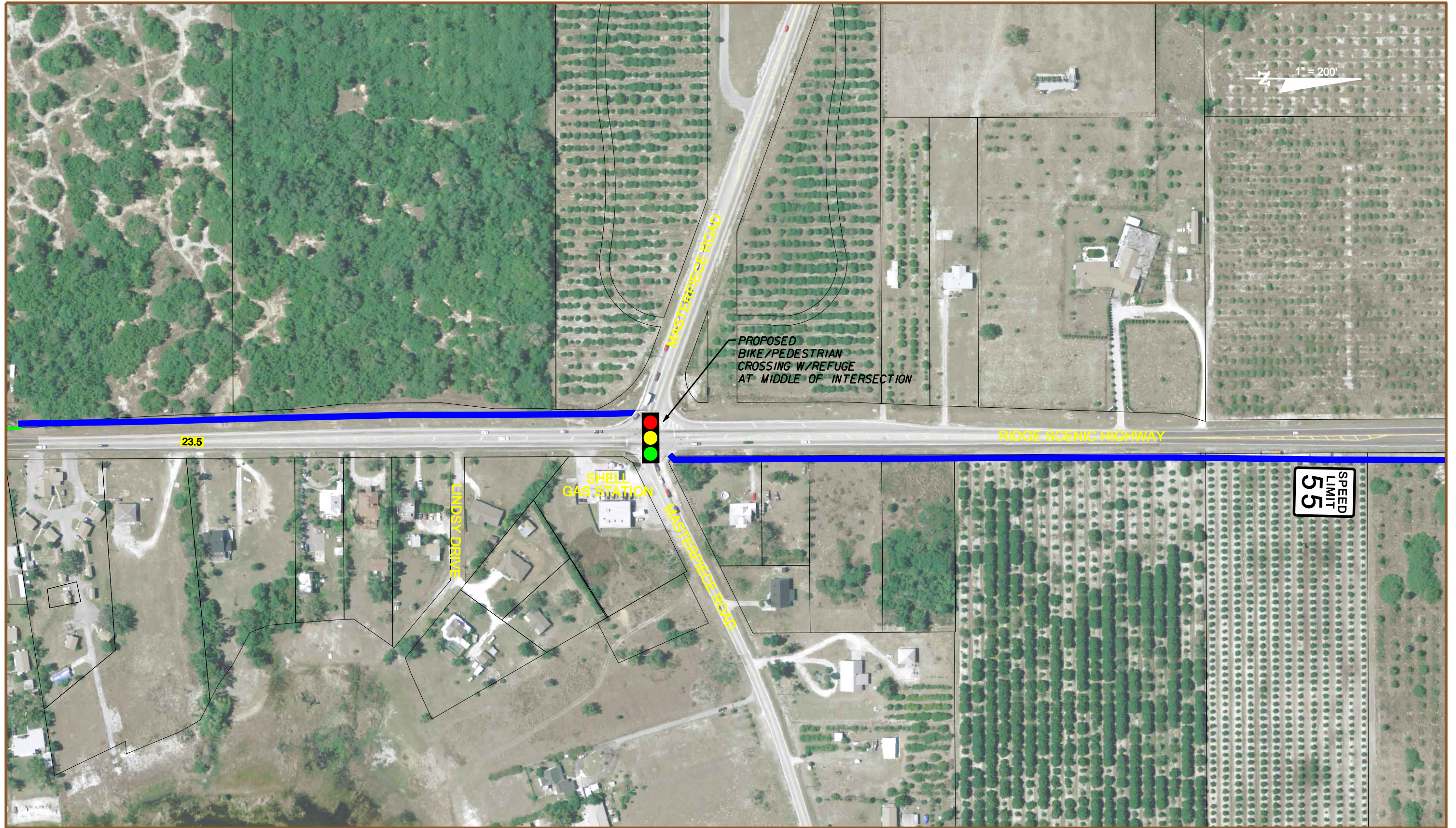
GIS Data Source: Polk County  
 GIS Data Date: December 9, 2008  
 Aerial Data Source: Polk County  
 Aerial Data Date: December 9, 2008

Corridor Detail Sheet  
 MP 22.88 to MP 23.45

EXHIBIT NO.  
**D-42**

# Ridge Scenic Highway Bike/Pedestrian Master Plan

FPID 403439-1-12-11



LEGEND	
	Proposed 12' Multi-Use Path
	Proposed 5' Sidewalk
	Proposed 8' Multi-Use Path
	Existing 5' Sidewalk
	Proposed Guardrail
	Proposed Retaining Wall
	Planned Trail
	County/City Boundary
	Full Signal
	Flashing Yellow Signal
	Mile Marker

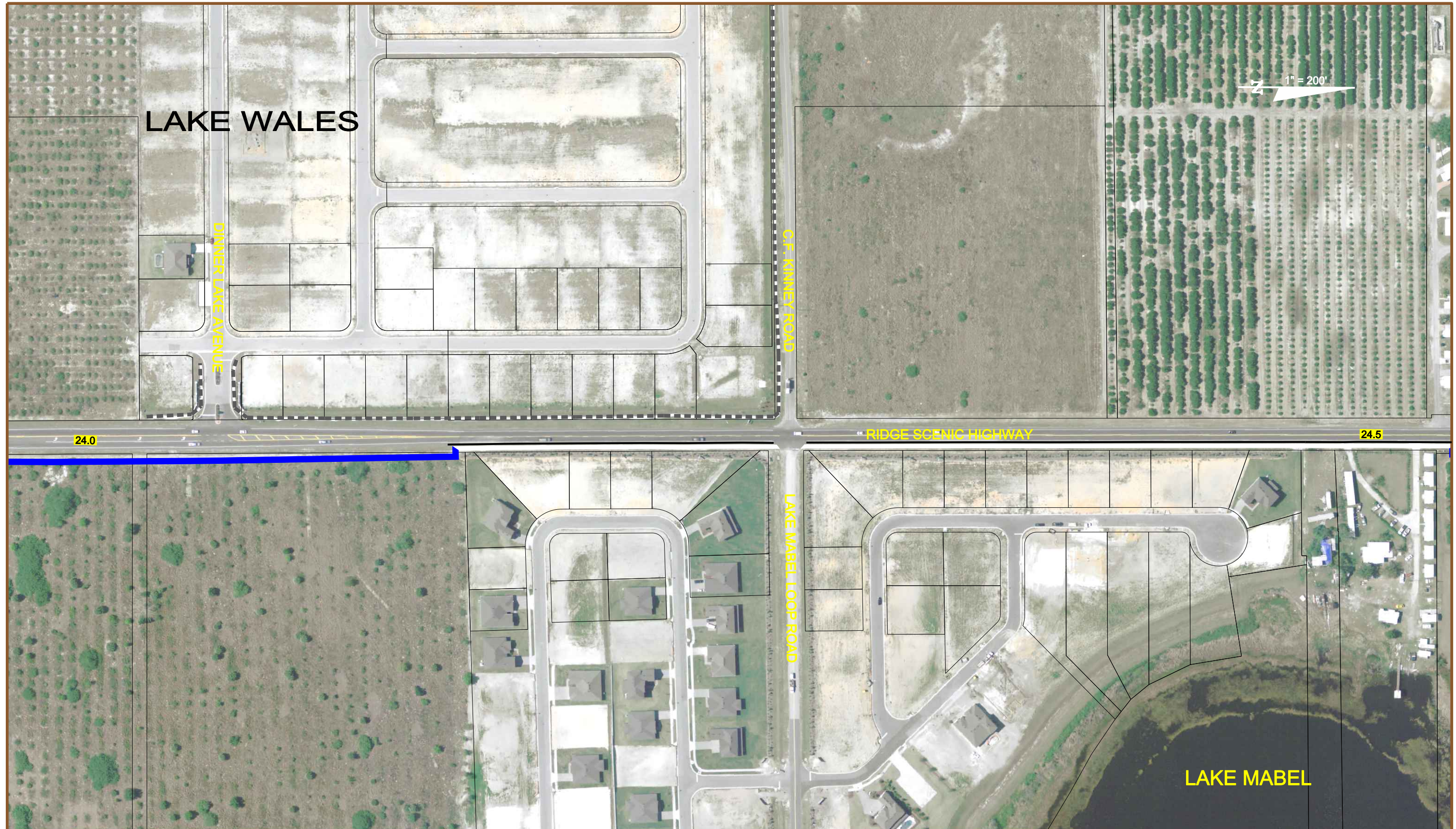
GIS Data Source: Polk County  
 GIS Data Date: December 9, 2008  
 Aerial Data Source: Polk County  
 Aerial Data Date: December 9, 2008

Corridor Detail Sheet  
 MP 23.42 to MP 23.99

EXHIBIT NO.  
**D-43**

# Ridge Scenic Highway Bike/Pedestrian Master Plan

FPID 403439-1-12-11



**JACOBS**

LEGEND			
	Proposed 12' Multi-Use Path		Full Signal
	Proposed 5' Sidewalk		Flashing Yellow Signal
	Proposed 8' Multi-Use Path		Mile Marker
	Existing 5' Sidewalk		Proposed Guardrail
			Proposed Retaining Wall
			Planned Trail
			County/City Boundary

GIS Data Source: Polk County  
 GIS Data Date: December 9, 2008  
 Aerial Data Source: Polk County  
 Aerial Data Date: December 9, 2008

**Corridor Detail Sheet**  
 MP 23.97 to MP 24.53

EXHIBIT NO.  
**D-44**